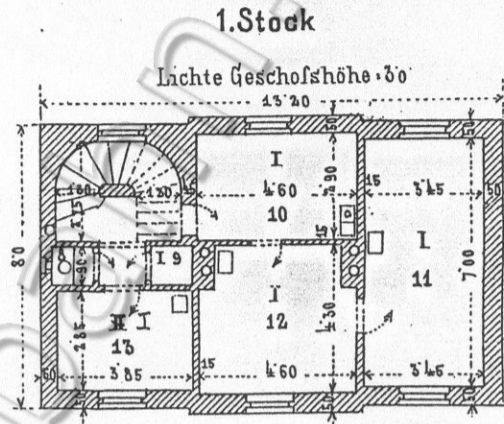
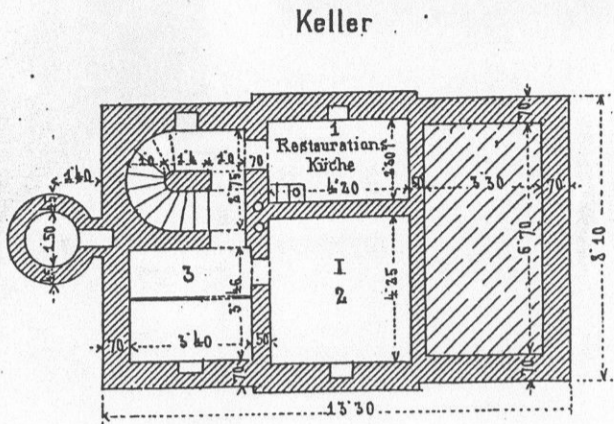
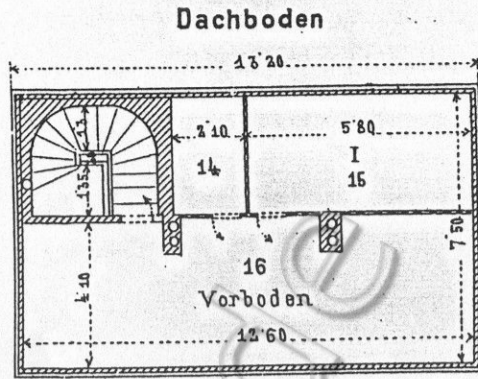
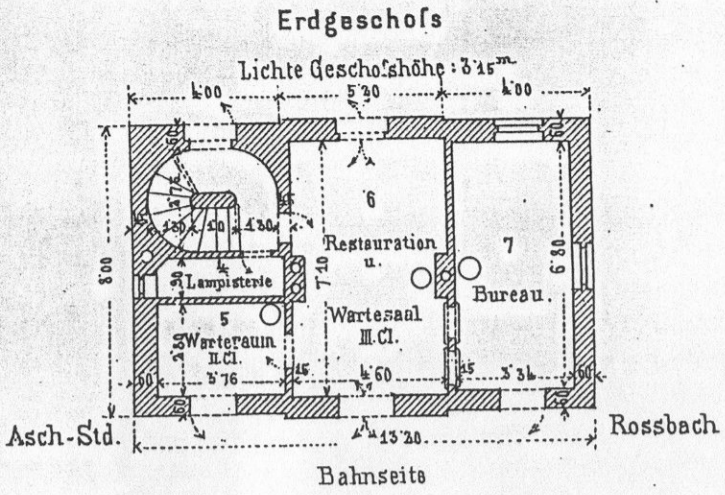


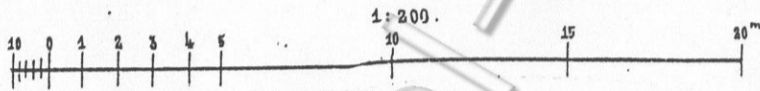
# STATION ROSSBACH.

Aufnahmsgebäude



Bureau für Hochbau  
Wien im September 1890.

*E. Eysenhardt*



Der Baudirector:

*W. W. W. W.*

Der Generaldirectionsrath:

*W. W. W. W.*

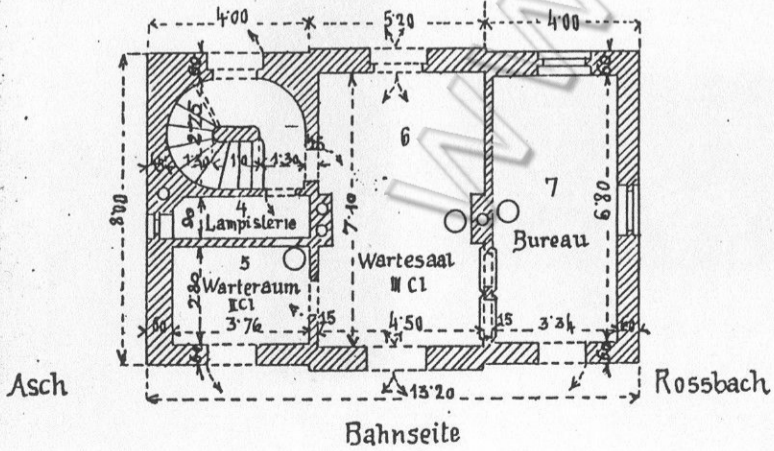
Staatsbahndirection Sibirien.

Linie: Asch-Roszbach

## Aufgelassene Station Rossbach.

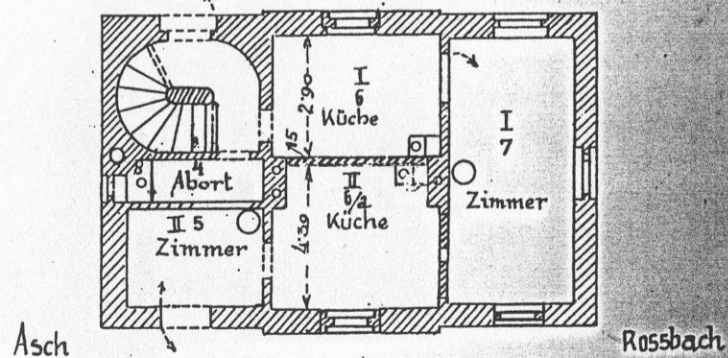
Aufnahmsgebäude  
Erdgeschoss

Gegenwärtiger Stand.



Projektirte Adaykierung

Strassenseite



Maass: 1:200

*W. W. W. W.*